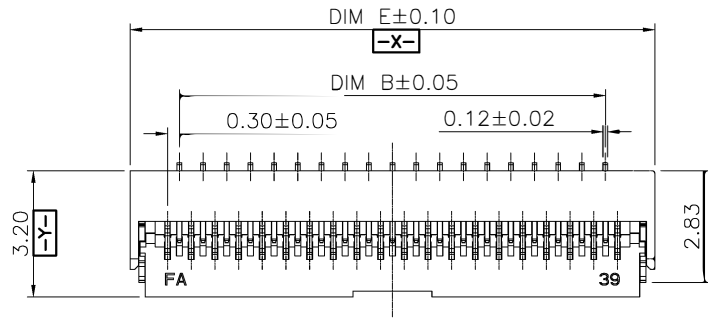


halogen free

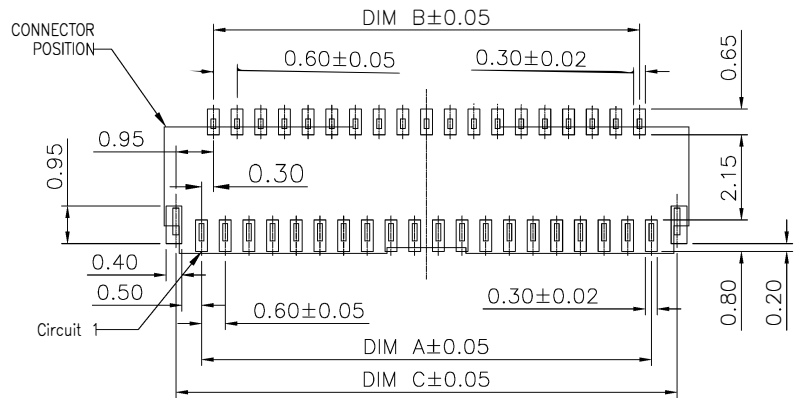
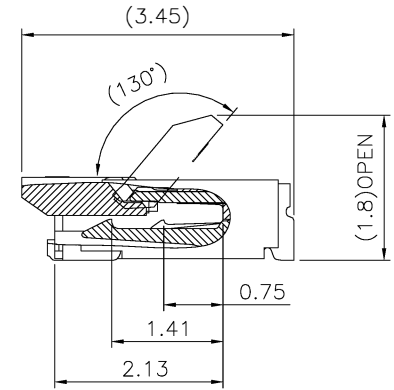
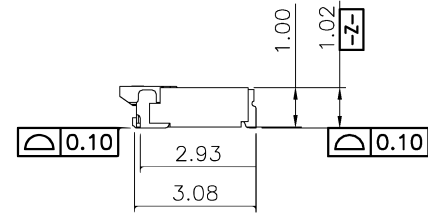
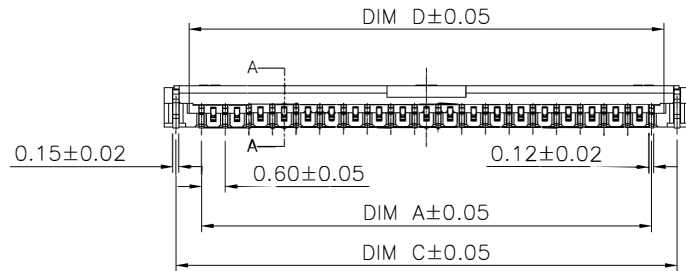
REV.	ECR/ECN No.	DESCRIPTION	DRAWN/DATE	CHECKED/DATE	APPROVED/DATE
A	/	NEW REVISION	May.Wang 2019-11-09	SH.Chen 2019-11-09	Rain.Han 2019-11-09



NO.	COMPONENTS	MATERIALS	SPECIFICATION:FINISH/COLOR	QTY.
1	HOUSING	thermoplastic high temp.	BLACK,UL94V-0	1
2	Actuator	thermoplastic high temp.	BLACK,UL94V-0	1
2	Terminals	PHOSPHOR BRONZE,T=0.12mm	50~100u" Nickel under plating over all 3u"Gold on contact and Gold flash solder area.	N
3	FITTING NAIL	PHOSPHOR BRONZE,T=0.15mm	50~100u" Nickel under plating over all 80~150u" Matte-Tin over all.	2

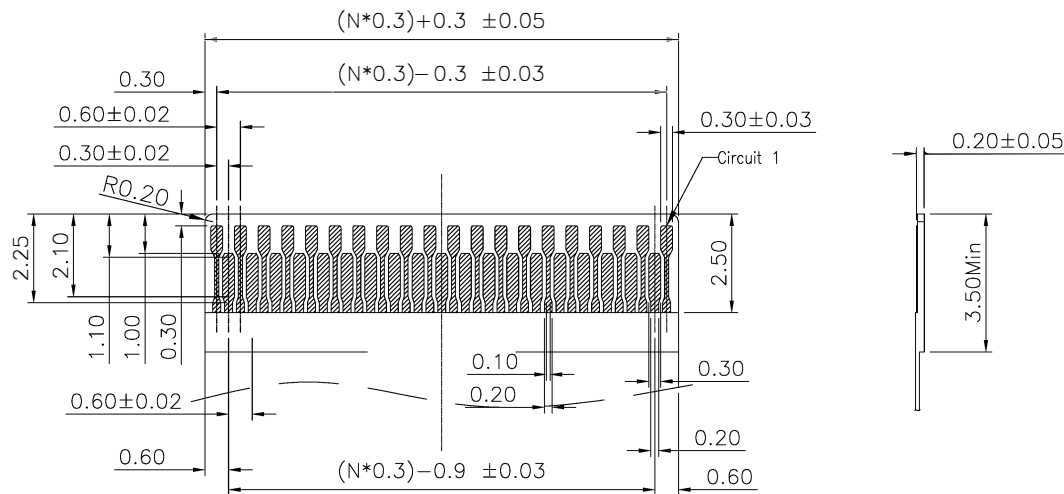
NOTE:  
 1.COMPLIANT TO RoHS 2.0  
 2."▽" Mark is Critical characteristic dimension  
 3."▼" Mark is Significant characteristic dimension  
 4.PART NO. LEGEND:

HRS-F14D-1B7H1-E8C\*\*  
 NO. OF POSITIONS  
 7H:PHOSPHOR BRONZE  
 0.075um MIN Au



UNLESS OTHERWISE SPECIFIED TOLERANCES		ANGLE OF PROJECTION		Horus Int. Electronics Co., LTD.	
X.	±0.30	X. *	± 5'	TITLE: 0.3Pitch H=1.0 FPC/FFC Front flip R/A Type2 SMT CONN	
X.X	±0.25	X.X *	± 4'		
X.XX	±0.20	X.XX *	± 3'		
X.XXX	±0.15	X.XXX *	± 2'		
LINEAR DIMS		ANGLES DIMS		PART NUMBER: HRS-F14D-1B7H1-E8C**	
DWG NO.: A-S0722				SCALE: A4	REV. A
MATERIAL		SEE NOTES		SCALE: 1:1	UNIT : mm
FINISHED		SEE NOTES		SHEET 1 OF 3	

1. FFC PATTERN DIMENSION



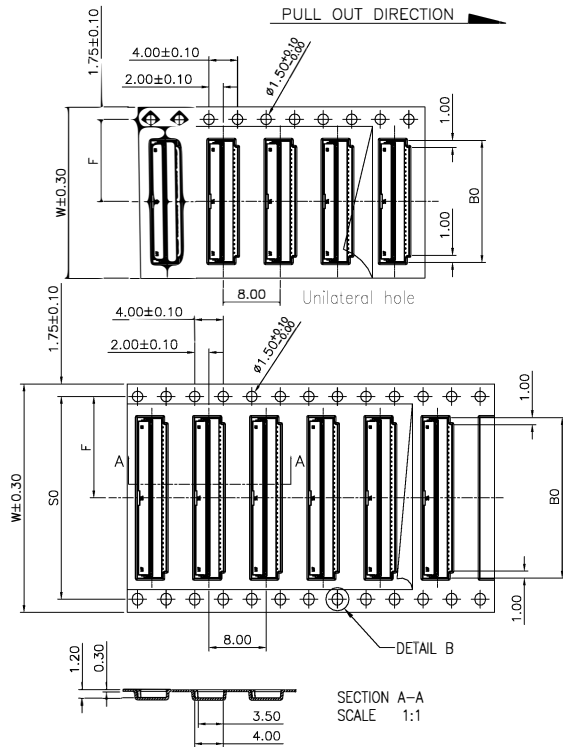
RECOMMENDED FPC/FFC DIMENSION

2. DIMENSIONS LIST:

NO.OF POS	DIM A	DIM B	DIM C	DIM D	DIM E	NO.OF POS	DIM A	DIM B	DIM C	DIM D	DIM E
07	1.80	1.20	3.10	2.43	3.70	43	12.60	12.00	13.90	13.23	14.50
13	3.60	3.00	4.90	4.23	5.50	45	13.20	12.60	14.50	13.83	15.10
15	4.20	3.60	5.50	4.83	6.10	47	13.80	13.20	15.10	14.43	15.70
17	4.80	4.20	6.10	5.43	6.70	49	14.40	13.80	15.70	15.03	16.30
19	5.40	4.80	6.70	6.03	7.30	51	15.00	14.40	16.30	15.63	16.90
21	6.00	5.40	7.30	6.63	7.90	53	15.60	15.00	16.90	16.23	17.50
23	6.60	6.00	7.90	7.23	8.50	55	16.20	15.60	17.50	16.83	18.10
25	7.20	6.60	8.50	7.83	9.10	57	16.80	16.20	18.10	17.43	18.70
27	7.80	7.20	9.10	8.43	9.70	59	17.40	16.80	18.70	18.03	19.30
29	8.40	7.80	9.70	9.03	10.30	61	18.00	17.40	19.30	18.63	19.90
31	9.00	8.40	10.30	9.63	10.90	63	18.60	18.00	19.90	19.23	20.50
33	9.60	9.00	10.90	10.23	11.50	65	19.20	18.60	20.50	19.83	21.10
35	10.20	9.60	11.50	10.83	12.10	67	19.80	19.20	21.10	20.43	21.70
37	10.80	10.20	12.10	11.43	12.70	69	20.40	19.80	21.70	21.03	22.30
39	11.40	10.80	12.70	12.03	13.30	71	21.00	20.40	22.30	21.63	22.90
41	12.00	11.40	13.30	12.63	13.90						

UNLESS OTHERWISE SPECIFIED TOLERANCES		ANGLE OF PROJECTION		后芮驰 (上海) 电子有限公司 Horus Int. Electronics. Co., LTD.					
X.	±0.30	X. °	± 5'						
X.X	±0.25	X.X °	± 4'	DOC TYP	Customer Drw		TITLE:		
X.XX	±0.20	X.XX °	± 3'	DRAWN	DATE	May.Wang	0.3Pitch H=1.0 FPC/FFC Front flip R/A Type2 SMT CONN		
X.XXX	±0.15	X.XXX °	± 2'	DESIGN	DATE	May.Wang			
LINEAR DIMS		ANGLES DIMS		CHECKED	DATE	SH.Chen	SIZE	PART NUMBER:	REV.
DWG NO.: A-S0722				APPROVED	DATE	Rain.Han	A4	HRS-F14D-1B7H1-E8C**	A
MATERIAL	SEE NOTES			FINISHED	SEE NOTES	SCALE		1:1	UNIT : mm
						SHEET		2	OF 3

1. PACKING INTO REEL:

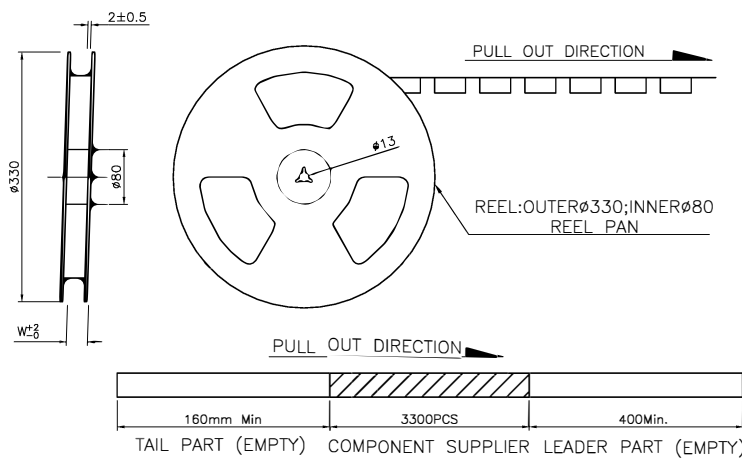
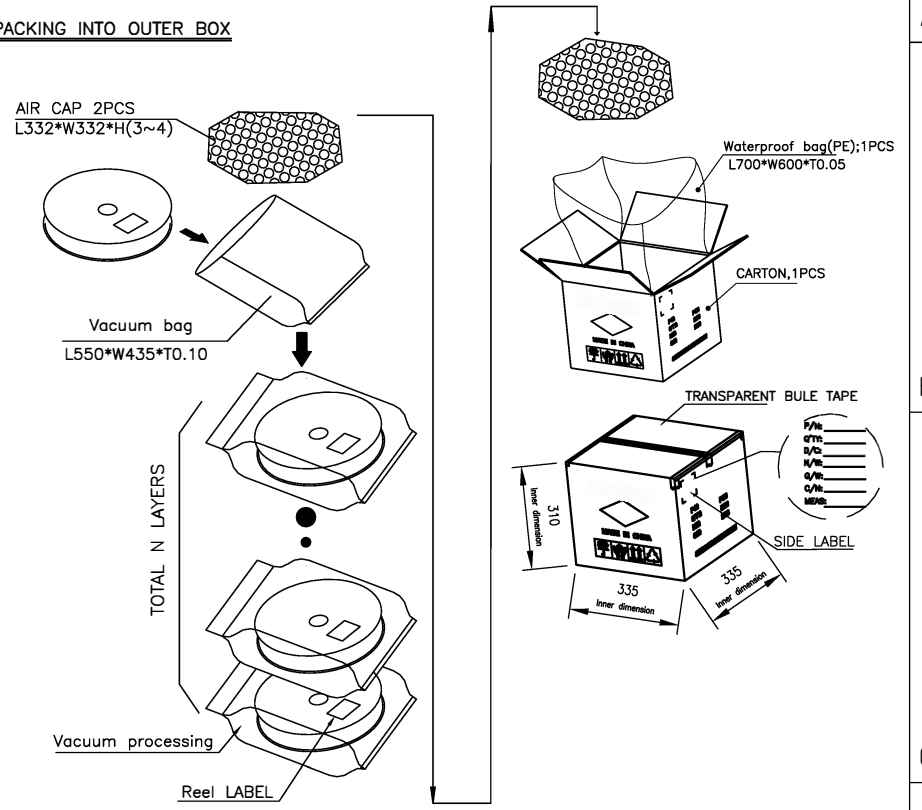


CKTS	B0±0.10	W	W1	F±0.10	S0±0.10	N
07	3.90					
09	7.30					
11	10.30					
13	10.30					
15	10.30	16.0±0.30	16.4	7.50		15
17	10.30					
19	10.30					
21	10.30					
23	10.30					
25	10.30					
27	10.30					
29	10.30					
31	10.30					
33	10.30					
35	10.30					
37	10.30					
39	10.30	24.0±0.30	24.4	11.5		10
41	10.30					
43	10.30					
45	10.30					
47	10.30					
49	10.30					
51	10.30					
53	10.30					
55	10.30					
57	10.30					
59	10.30					
61	10.30	32.0±0.30	32.4	14.5	28.4	8
63	10.30					
65	10.30					
67	10.30					
69	10.30					
71	10.30	44.0±0.30	44.4	20.2	20.2	6

NOTES:

- MATERIAL:
  - CARRY TAPE:HIPS,T=0.30mm,CLEAR
  - REEL:HIPS,BLUE.
  - SHIM:PE,CLEAR.
- PRIMARY PACKING:5000PCS/REEL.
- SECONDARY PACKING:"N"REELS/CARTON ("TOTAL"=N REEL/CARTON).
- PEELING RESISTANCE: 0.1N~0.7N(10~70gf);  
PEELING ANGLE: 165°~180°;  
PEELING SPEED: 300mm/minutes.

2:PACKING INTO OUTER BOX



UNLESS OTHERWISE SPECIFIED TOLERANCES			ANGLE OF PROJECTION		后芮驰 (上海) 电子有限公司 Horus Int. Electronics. Co., LTD.
X.	±0.30	X. *	± 5'		
X.X	±0.25	X.X *	± 4'		
X.XX	±0.20	X.XX *	± 3'	DOC TYPE	Customer Drw
X.XXX	±0.15	X.XXX *	± 2'	DRAWN DATE	May 2021-11-09
LINEAR DIMS		ANGLES DIMS		DESIGN DATE	May 2021-11-09
DWG NO.:		A-S0722		CHECKED DATE	SH.Chen 2021-11-09
MATERIAL		SEE NOTES		APPROVED DATE	Rain.Han 2021-11-09
FINISHED		SEE NOTES		SCALE	1:1
				UNIT	mm
				SHEET	3 OF 3
				PART NUMBER:	HRS-F14D-1B7H1-E8C**
				REV.	A